



*Shenzhen Mooncell Electronics Co., Ltd*

# *Sending Card Series*

## *ST40 Product Speification*

---

---

# 1 Product Overview

---

## Product Introduction

ST40 is the Sending Card that produced by Mooncell, it supports DVI Input and is with 4 Network Output Ports. The maximum loading capacity could reach up to 2.6 million pixels,withpowerful processing ability,super reliability and high cost performance.

## Product Features

- 1 \* DVI, or 1 \* HDMI video signal input.
- 1x AUDIO input,synchronous transmission via the network cable.
- 4x gigabytes Ethernet output ports,it supports the arbitrary splicing.
- 1x USB port communication, multiple sending cards could be cascading connected to one computer.
- It has 1x 100M megabyte Ethernet Port.
- It supports Ethernet Port Loop Dual Backup, Dual Master Controller Backup.
- It supports to have multiple preset resolutions:1024×768 、 1280×1024 、 1366×768 、 1600×1200 、 1920×1080 、 2048×1152 、 2560×960 and the user defined resolution is supported.
- It is compatible with 30HZ,50HZ,60HZ,120HZ and other Frame Rate Input.
- It supports the upper computer software to detect the operating parameters and status of the sending card.
- It supports to read the configurations back from where it was stored ( configuration read back )
- It supports to detect the error rates of the gigabyte network.

## Application Scenarios

Mooncell ST40 can be widely used in small rental and simple fixed LED display fields, and has significant advantages in application scenarios such as hotel stages, bars, TV stations, and outdoor advertising projects.

---

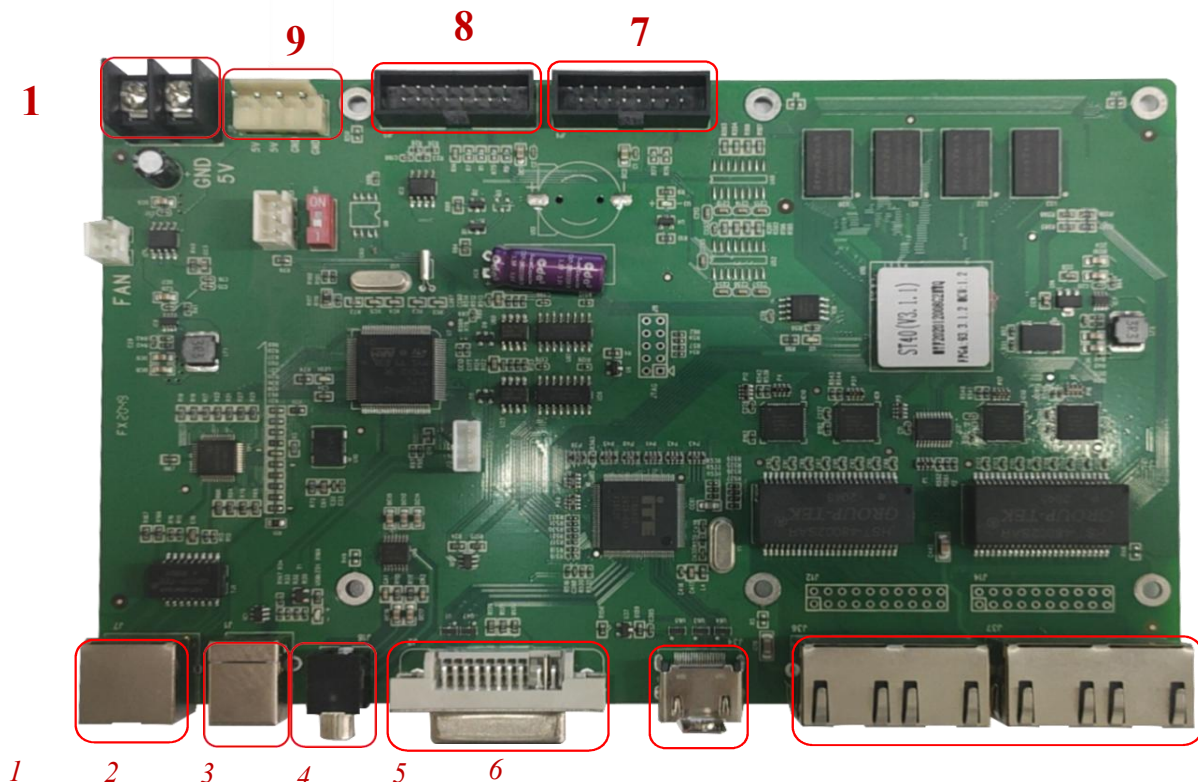
## 2 Product Parameters

---

### Basic Parameters

Loading Capacity	1 Network Port	650 Thousand Pixels
	Entire Unit	2.6 Million Pixels
Loading Range	Width	128-4096 Pixels
	Height	64-4096 Pixels
Shift Range	Width	0—4095 Pixels
	Height	0—4095 Pixels

## Hardware Introduction



Interface Illustration		
Input Interface		
#	Name	Illustration
3	AUDIO	3.5mm Audio Input Port
4	DVI	DVI Video Signal Input Port
5	HDMI	HDMI Video Signal Input Port
Output Interface		
#	Name	Illustration

6	Gigabyte Ethernet Ports	<ul style="list-style-type: none"> <li>◆ 4 x Gigabyte Ethernet Ports</li> <li>◆ The maximum loading capacity will be 650 thousand pixels for 1 port</li> <li>◆ It supports the loop backup between the Ethernet ports.</li> </ul>
Control Interface		
#	Name	Illustration
2	USB (B Type)	To get it connected to the software on PC so as to communicate.

Function Interface		
#	Name	Illustration
1	100M megabyte Ethernet Port	100M megabyte Ethernet signal Port
Power Interface		
#	Name	Illustration
9	DC POWER PORT	Standard 3.96MM Socket, it is suitable for the power supply of the computer.
10		Standard,5.08MM Socket, it is suitable for the internal video processor.

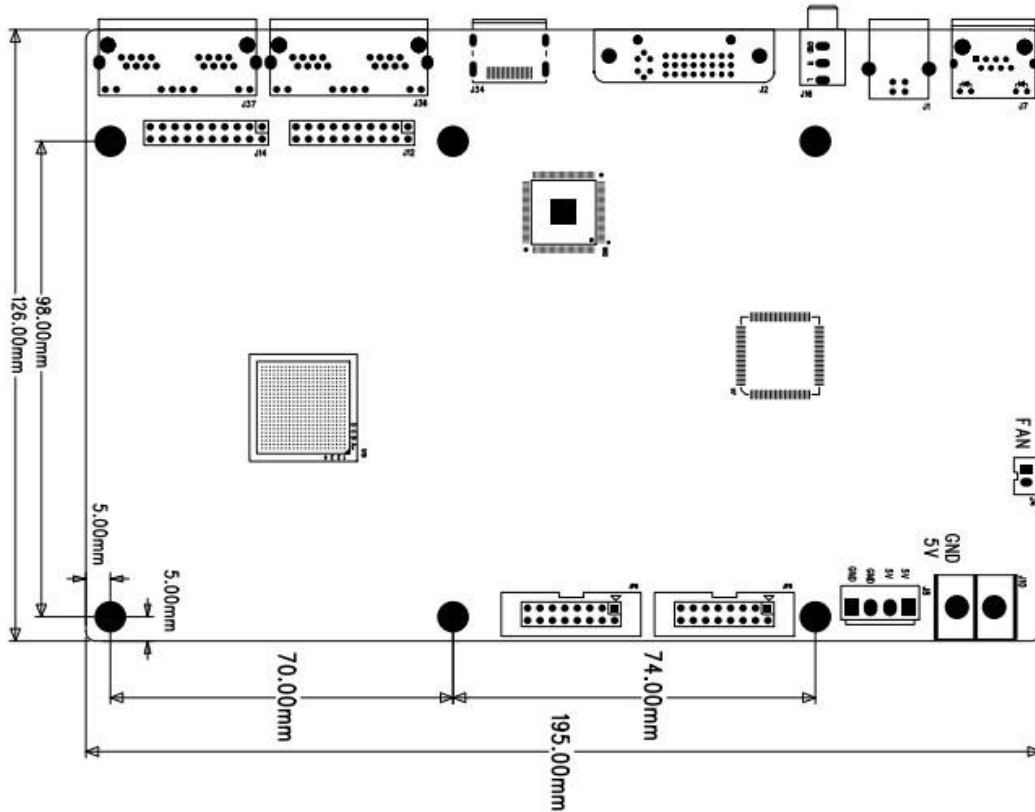
Function Interface					
7	Keyboard Plate Interface	Definition	Pin	Pin	Definition
		P1 (network port 1 indicator light)	1	2	P2 (network port 2 indicator light)
		P3 (network port 3 indicator light)	3	4	P4 (network port 4 indicator light)
		P5 (spare)	5	6	P5 (spare)
		GND	7	8	5V
		USB (USB communication indicator)	9	10	DVI (DVI signal indicator)
		HDMI (HDMI signal indicator)	11	12	MCU (MCU status indicator)
		FPGA (FPGA status indicator)	13	14	/
		TXD (serial transmission, TTL level)	15	16	RXD (serial transmission, TTL level)

---

---

		Definition	Pin	Pin	Definition
8	Expansion board interface	5V	1	2	GND
		A (485 interface TTL level)	3	4	B (485 interface TTL level)
		/	5	6	3D (3D transceiver signal)
		GND	7	8	GND
		TXD1 (serial transmission, TTL level)	9	10	RXD1 (serial transmission, TTL level)
		GND	11	12	5V
		TXD2 (serial transmission, TTL level)	13	14	RXD2 (serial transmission, TTL level)
		GND	15	16	5V

## Dimensions



# 3 Product Specifications

## Specifications

Electric Parameters	Input Voltage	5V
	Rated Power	7W
Operating Environment	Operating Temperature	-20°C - 70°C
	Operating Humidity	10%RH-90%RH No Solidification
Dimensions	195mmX126mm	
Net Weight	161g	

## Precautions

1. The installation process should be completed by professionals.

2. It has to be anti-static.
3. Waterproof and dust proof needed.