



MTB2000E Master Controller Series

Specification V3.0

Shenzhen Mooncell Electronics Co., Ltd

1 Product Overview

Product Introduction

Mooncell MTB2000E has its capability of receiving a variety of video signals, ultra high-definition 4KX2K@60HZ image processing and sending capability; it can send the processed video to the led screen through the Ethernet Port; with strong processing ability, super reliability and high cost performance.

Product Features

- Varieties of input interface: 1X DP 1.2 Input; 1X HDMI2.0 Input; 1X Audio Input
- Varieties of Output Interface: 20X Gigabyte Ethernet Port Output;
- Multiple Communication Control Methods: 1X USB Port; 1X Serial Port; 1X 100 Megabyte Ethernet Port..
- It supports Ethernet Port Loop Dual Backup, Dual Master Controller Backup.
- It supports to have multiple preset resolutions; and the user defined resolution is supported.
- It is compatible with 30HZ, 50HZ, 60HZ, 120HZ and other Frame Rate Input.
- It supports the upper computer software to detect the operating

parameters and status of the sending card.

- It supports to read the configurations back from where it was stored (configuration read back)
- It supports to detect the error rates of the gigabyte network.
- Support 3D display, active 3D display
- Support 3D-LUT
- Support zoom function

Application Scenarios

Mooncell MTB2000E is with powerful video processing and sending ability which has been widely used in various application scenarios such as: Stage, Conference,Event, Exhibition ,High-end Rental and Small Pixel Pitch Led Displays.

2 Product Parameters

Basic Parameters

Loading Capacity	1 Network Port	650 Thousand Pixels
	Entire Unit	10.4 Million Pixels
Loading Range	Width	128—4096 Pixels
	Height	64—4096 Pixels
	Width /entire unit	128-8192 pixels
	Height/entire unit	64-8192 pixels
Shift Range	Width	0—8192 Pixels
	Height	0—8192 Pixels

Hardware Introduction



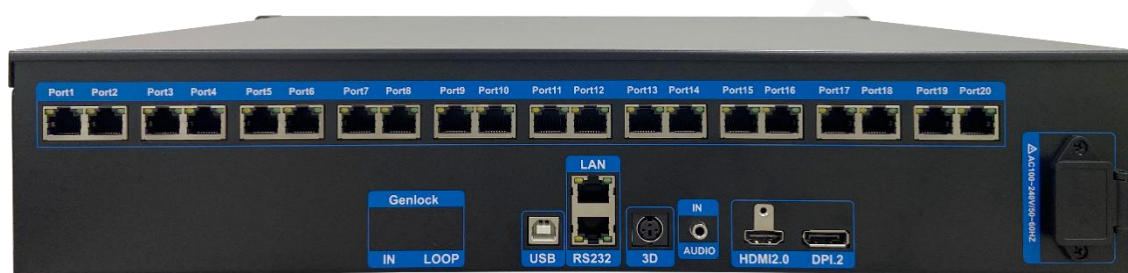
Front Panel

Front Panel Illustration

Front Panel Illustration		
#	Name	Illustration
1	ON/OFF	Power On/Off for Master Controller
2	LCD Indicator	To show the current status of the device and to set the menu item parameters
3	Rotating Knob	When it's in the Main Interface, Press the Knob to enter the Menu Operation Interface.

		When in the Menu Operation Interface, rotate the knob to select the menu, press the knob to select the current menu or enter sub-menu
4	ESC	Exit the current menu or operation.

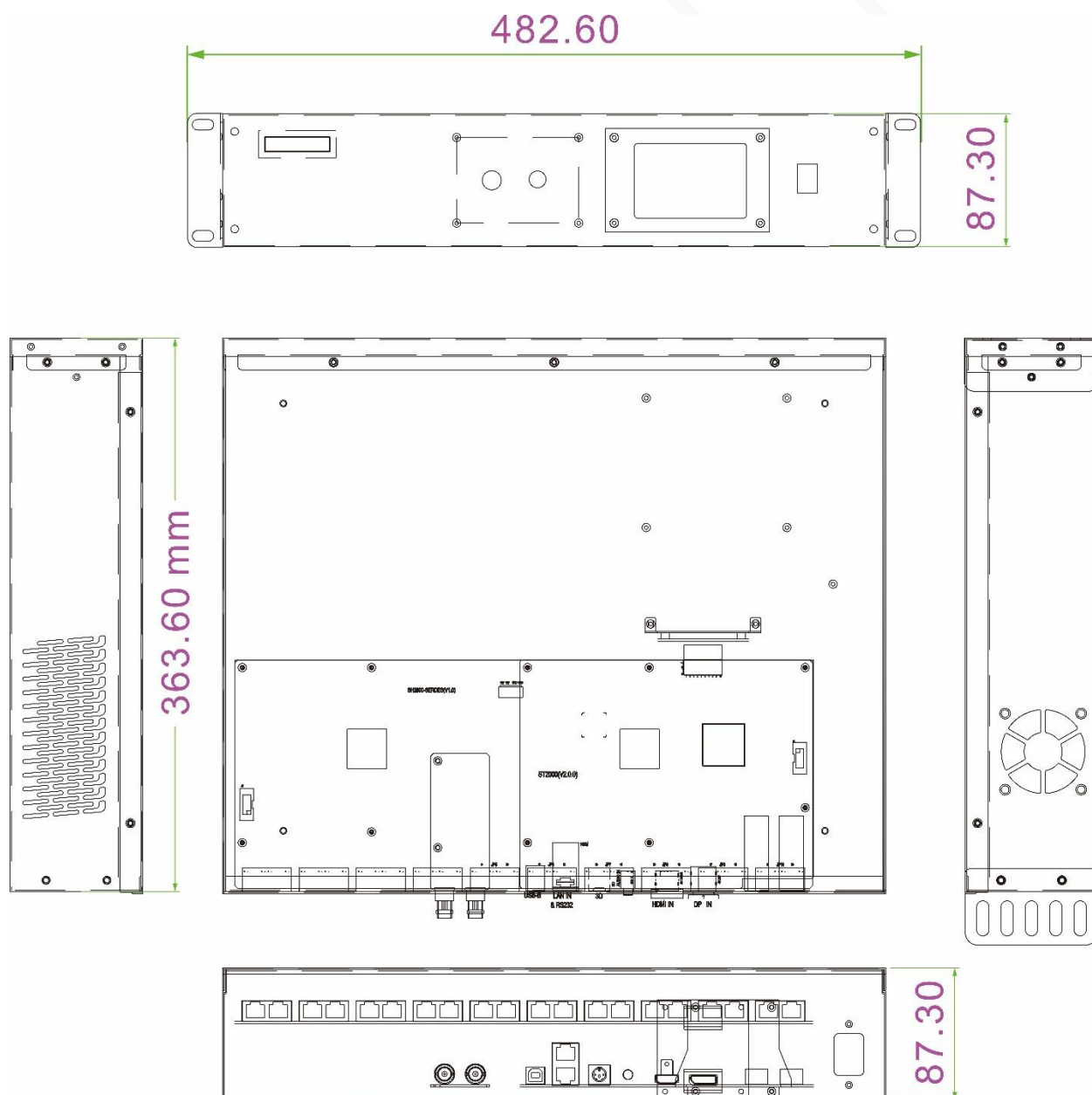
Backside Panel



Backside Panel Illustration		
Input Interface		
Interface	QTY	Illustration
AUDIO	1	3.5mm Audio Input Interface
DP1.2	1	The maximum resolution 3840x2160@60Hz, downwards compatible. The maximum width of the graphics card is
HDMI2.0	1	The maximum resolution 3840x2160@60Hz, downwards compatible. The maximum width of the graphics card is
OUTPUT Interface		
Interface	QTY	Illustration
Ethernet Port	20	20 x Gigabyte Ethernet Port Output, The loading capacity could reach up to 10.4 million pixels. The maximum loading capacity for 1 single network port:
Control Interface		
Interface	QTY	Illustration
USB	1	to connect to the PC end
RS232	1	1x DB9 interface to connect the central control devices.

LAN	1	100M megabyte Interface for Local Area Network
Extension Ports		
3D	1	The reserved interface(to connected the 3D Transmitter,it needs to be customized according to the requirements)
Power Interface		
Interface	QTY	Illustration
Power Port	1	AC-100-240V-50/60HZ AC Power Connector

Dimensions



3 Product Specifications

Specifications

Electric Parameters	Input Voltage	AC-100-240V-50/60HZ	
	Rated Power	70W	
Operating Environment	Operating Temperature	-20℃ - 70℃	
	Operating Humidity	10%RH-90%RH	No Solidification
Dimensions(Device)	482.6mmX363.6mmX87.3mm (Length x Width x Height)		
Dimensions (Carton)	565×445×185mm		
Net Weight	6.2Kg		
Packaging	1 x MTB2000E. Peripherals: 1x USB Cable, 1x HDMI Cable, 1x DP Cable. 1x Certificate		

Precautions

1. **High voltage danger: The working voltage of this product is AC -100V ~ 240V.**
2. **It is forbidden to immerse conductive objects such as liquids and metal fragments into the equipment to avoid safety accidents.**
3. **Please use the equipment in a dry and clean environment.**