



Shenzhen Mooncell Electronics Co., Ltd

Splitter Series

*100M Ethernet Splitter
SH100*

Content

<i>1</i> Product Overview	1
<i>Product Introduction</i>	1
<i>Product Features</i>	1
<i>2</i> Product Parameters.....	2
<i>Basic Parameters</i>	2
<i>Hardware Introduction</i>	2
<i>Dimensions</i>	5
<i>3</i> Application Scenarios.....	6
<i>4</i> Product Parameters.....	8
<i>Basic Parameters</i>	8
<i>Precautions</i>	8

深圳市摩西尔电子有限公司

Updates History

<i>File Version</i>	<i>Released Date</i>	<i>Updates Records</i>
V3.0	29/10/2020	First Release

深圳市摩西尔电子有限公司

Product Overview

Product Introduction

SH100 is a Gigabyte Ethernet to Megabyte Ethernet Splitter that independently researched and developed by Mooncell, in order to solve the problems of the traditional led screen that with lots of input and output ports, by using it together with Mooncell independently developed C series receiving card, it can achieve to get the signal transferred via just a 2 core CAT5 twisted pair cable so that to combine the wiring of the led display and power into just one design. The loading capacity of the device is : 490 thousand pixels. And it with a strong processing ability to efficiently enhance the loading utilization rate. The strong signal transferring ability, high reliability and super cost-effective has made this SH100 an excellent product in this industry.

Product Features

- *1x RJ45 Ethernet Port Input, 1x Ethernet Port Output, and it can be cascading connected at your option.*
- *8x Megabyte Ethernet Port Output, to Mooncell C series receiving card.*
- *Two Way Loop Backup Function*
- *Multiple Machine Cascading Splicing Function.*
- *It supports the upper computer software to monitor the operating parameters and its status.*
- *It supports to read back the configuration parameters.*
- *It supports the detecting of the Gigabyte Ethernet Error Rate.*
- *It supports Off Line to test with a physical button.*
- *The maximum loading capacity: 491520 pixels.*
- *8 x Megabyte Ethernet Ports, each port supports to load 61440 pixels, within the loading area of the sending card, you can load any ranged pixels.*
- *it supports to save the static parameters of the splitter and it can be safely upgraded.*

Application Scenarios

It could be widely used for led strip screen, grid screen and led lighting screen.

深圳市摩西尔电子有限公司

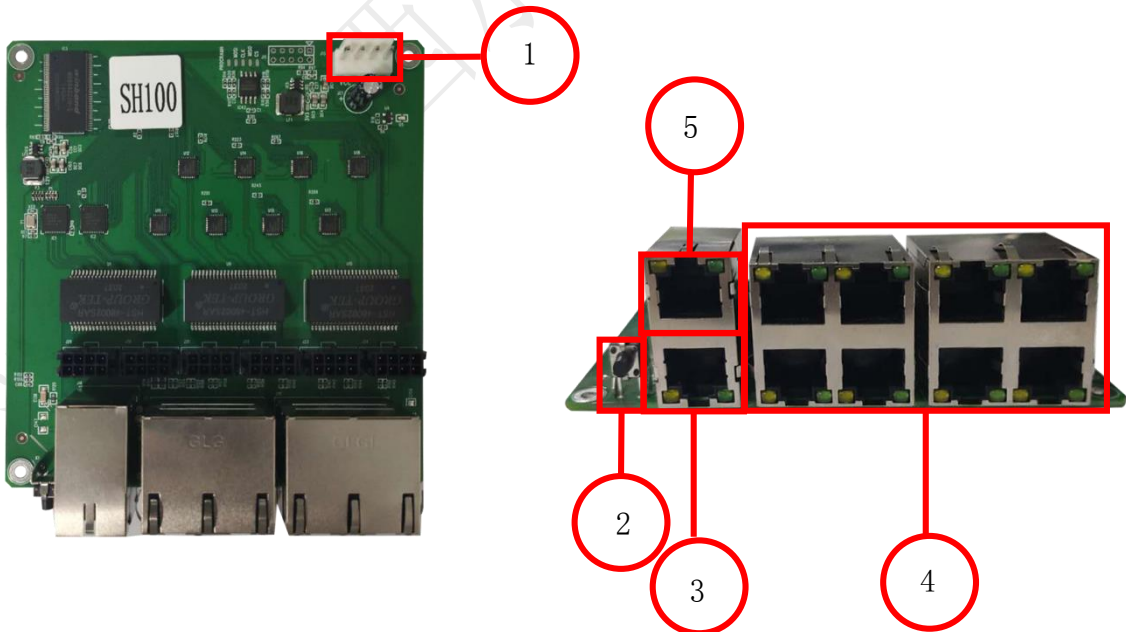
2 Product Parameters

Basic Parameters

Loading Pixels	The entire Unit	491520 Pixels
	Single Ethernet Port	61440 Pixels
Loading range	Width	0—2048 Pixels
	Height	0—2048 Pixels
Offset Range	Width	0—2048 Pixels
	Height	0—2048 Pixels

Hardware Introduction

Front Panel



Front Panel Illustration		
#	Name	Illustration
1	Power Connector	5V Power Connector
4	OUI-OUT8	8x Megabyte Signal Output to C series receiving card
3	IN Port	Input Signal,the signal will be inputted from the sending card. The Operating Status Indicator
5	LINK Port	Output to next sub-control card
2	Button	Test Button

Indicator Illustration

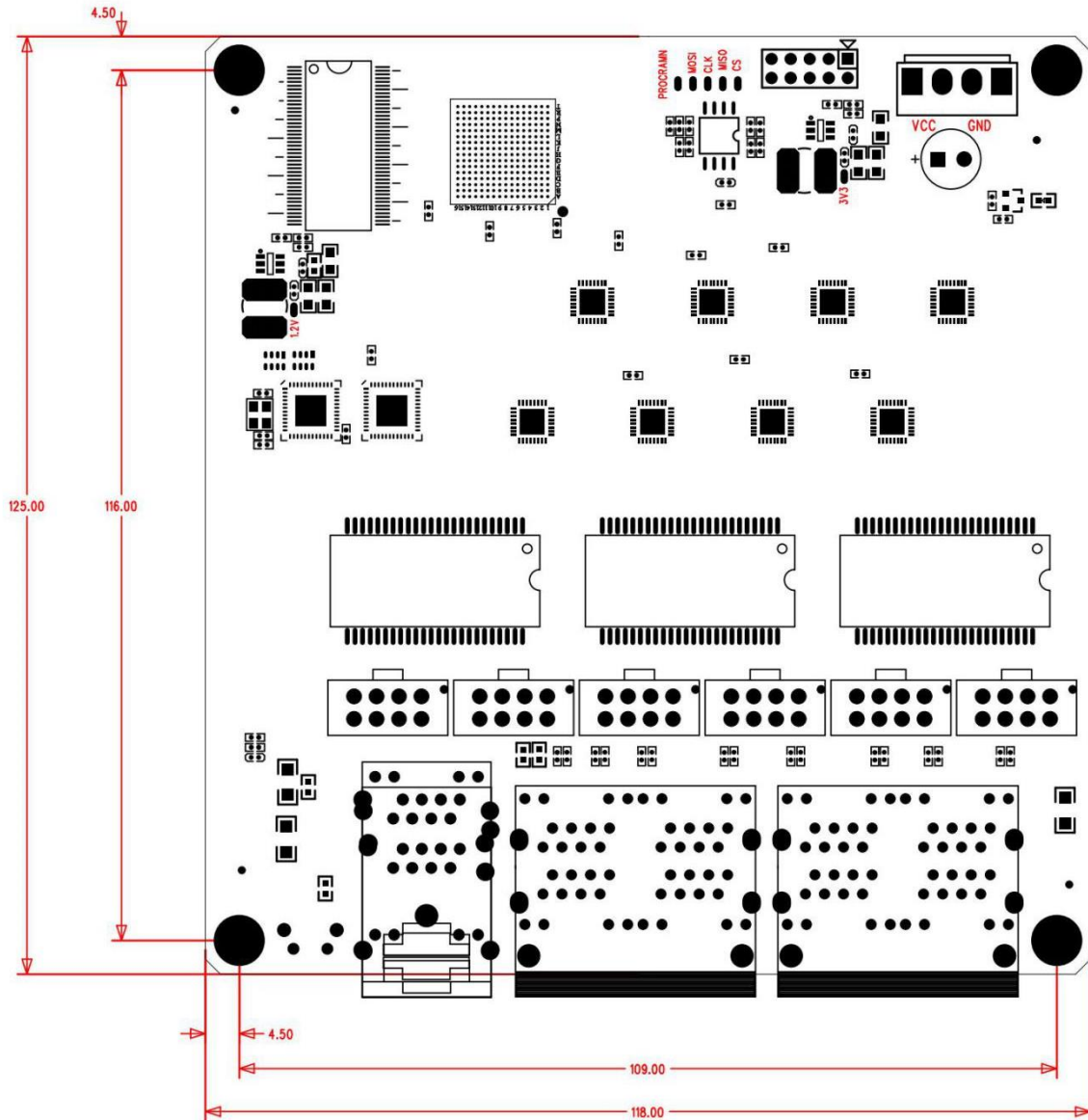
Indicator	Illustration	
OUT1-OUT8	Yellow light long-lasting on	Powered on
	No light(goes out)	Abnormal Power,power is not on
	Flashing	The splitter and the receiving card are communicating normally
IN	Long lasting on	Powered on
	Flickering Slowly at a constant speed	The receiving card is working properly, The Ethernet Cable Connection is fine, No DVI Signal Input
	Flickering Fast at a constant speed	The receiving card is working properly, The Ethernet Cable Connection is fine, with DVI Signal Input
	It goes out	No Gigabyte Signal
	Fast Flashing 3 times at intervals	The receiving card is working properly, The Ethernet Cable Connection is fine, with DVI Signal Input
LINK	Long lasting on	Powered on

<i>Flickering Slowly at a constant speed</i>	<i>The receiving card is working properly, The Ethernet Cable Connection is fine, No DVI Signal Input</i>
<i>Flickering Fast at a constant speed</i>	<i>The receiving card is working properly, The Ethernet Cable Connection is fine, with DVI Signal Input</i>
<i>It goes out (always off)</i>	<i>No Gigabyte Ethernet Signal</i>
<i>Fast Flashing 3 times at intervals</i>	<i>The receiving card is working properly, The Ethernet Cable Connection is fine, with DVI Signal Input</i>

深圳市摩西尔电子有限公司

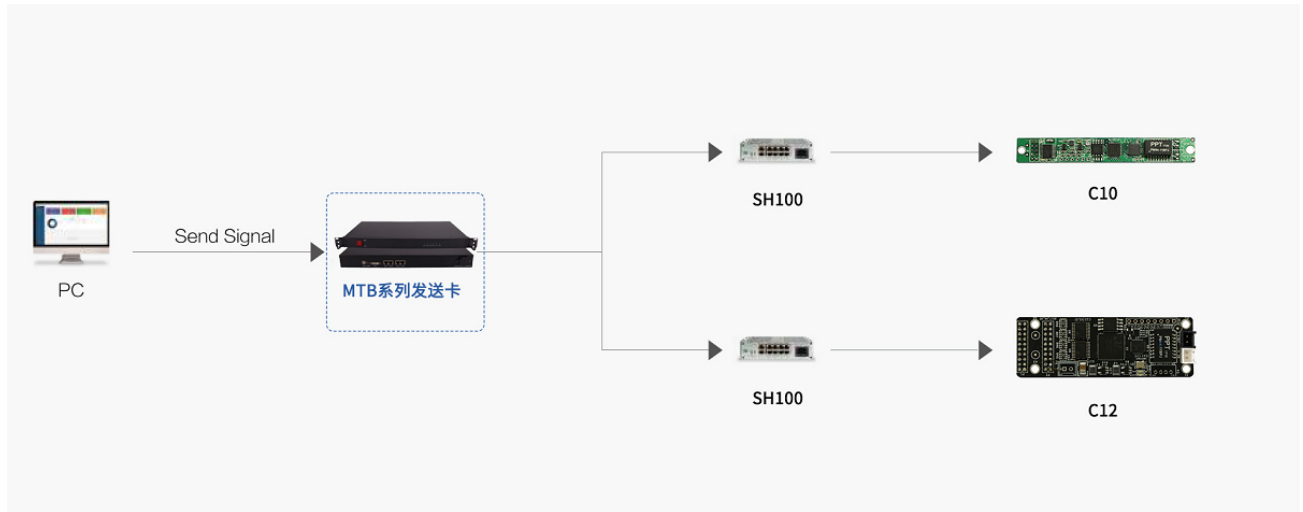
100M Splitter
SH100 Specs

Dimensions



3 Application Scenarios

Application Schematic



(Case Studies 1)

100M Splitter
SH100 Specs



(Case Studies 2)

深圳市摩西尔电子有限公司

4 Product Parameters

Basic Parameters

<i>Electric Parameters</i>	<i>Input Voltage</i>	5V
<i>Operating Environment</i>	<i>Operating Temperature</i>	-40 °C - 80 °C
	<i>Operating Humidity</i>	10%RH-90%RH No freezing
<i>Dimensions</i>	125mm X 118mm (Length x width)	

Precautions

- *High voltage danger: The working voltage of this product is AC -100V~240V.*
- *It is forbidden to immerse conductive objects such as liquids and metal fragments into the equipment to avoid safety accidents.*
- *Please use the equipment in a dry and clean environment.*